

DIVISION OF FORESTRY TOK-COPPER RIVER

FIVE YEAR SCHEDULE OF TIMBER SALES Fiscal Year 2024-2028



Submitted By:

Kevin Meany
Northern Region Forester

Prepared By:

Dub Evans
Resource Forester

Division of Forestry & Fire Protection
Department of Natural Resources
State of Alaska
3700 Airport Way
Fairbanks, Alaska 99709
Phone: (907) 451-2626 Fax: (907) 458-6895

**ALASKA DEPARTMENT OF NATURAL RESOURCES
DIVISION OF FORESTRY & FIRE PROTECTION
TOK-COPPER RIVER
Five-Year Schedule of Timber Sales (FYSTS)
Fiscal Year 2024-2028**

This Five-Year Schedule of Timber Sales (FYSTS) provides information about planned or proposed timber sales and associated road construction in the Tok and Copper River Management Areas. This schedule is planned to support the local forest industry along with providing for the local demand of woody biomass and fuelwood.

Purpose of the Five- Year Schedule of Timber Sales

This schedule is a scoping document that provides a timeline that identifies timber sales, their volumes, and their locations. It must contain enough information to provide the public and the forest products industry with a basis to comment on proposed sale offerings. The timber sales included in this schedule are part of a management policy that ensures a sustained yield of renewable forest resources and the integrated use of forest lands by a myriad of users, as guided by Alaska State statutes and regulations, the Tanana Valley State Forest Management Plan, and the State of Alaska DNR’s Yukon Tanana Area Plan (YTAP, 2014) and Eastern Tanana Area Plan (ETAP, 2015). Sales are located across a wide area of the forest land base, they vary in size, species composition, and developmental requirements. Emergency salvage sales, market conditions, sale preparation challenges, logistical constraints, funding and other considerations may cause some proposed sales to be dropped or moved between years.

Generally, the Division of Forestry (DOF) may not offer a timber sale unless it has appeared on at least one of the two Five-Year Schedules immediately preceding the sale. Sales are exempt from this requirement if they are: 160 acres or less; will cause substantial losses of economic value on salvage sales; or emergency sales in areas with fire; allow for the spread of damaging insects, or other natural threats; or preclude a local economic enterprise or forest management project that is in the state’s best interest. (References: AS 38.05.113, AS 38.05.117, and 11 AAC 71.010)

Timber Sale Land Base

The forest management activities identified in this Five-Year Schedule of Timber Sales 2024-2028 are consistent with the Yukon Tanana Area Plan (YTAP), Eastern Tanana Area Plan (ETAP) and the Tanana Valley State Forest (TVSF) Management Plan. The TVSF Plan covers approximately 1.81 million acres of forest-designated lands in Tok and Copper River areas, and the ETAP/YTAP provide management guidance on all types of state land over an even larger area. Large tracts of forest are in forestry designation, and can have multiple designations such as wildlife habitat, recreation, and settlement. These sales have the potential for multiple project goals such as timber production, wildlife habitat enhancement, wildland fire fuels mitigation, and development of settlement lands.

Management Intent of the DOF Timber Sale Program

DOF's management intent for Tok-Copper River is to provide raw material available for harvest to the local/regional timber businesses of all sizes and to Alaska's Interior communities for personal use. This FYSTS is designed to meet the current and anticipated demands for timber and fuel in the Tok-Copper River Area for the next five years.

Forest access roads will be constructed to meet DOF Road and Bridge Standards, the TVSF Management Plan, the ETAP and YTAP and Best Management Practices for the Alaska Forest Resources and Practices Act. Road construction is divided into two main categories: winter road only and all-season road. DOF will work closely with ADF&G staff, relevant Advisory Committees, and private landowners on creating road access that meets the needs of multiple user groups. Future road development will focus on quality design and location, though gates to prevent highway vehicle access may be employed for seasonal closures or to protect sensitive values. This will improve all season road conditions, cost of maintenance, and provide for year-round access. Where pertinent, approximate access routes have been indicated in maps. DOF will address access development and roads in detail with each of the Best Interest Findings and Forest Land Use Plans (FLUP) for every proposed timber sale submitted for agency and public review.

The Tok-Copper River DOF office works closely with ADF&G biologists on timber harvest activities and wildlife habitat enhancement projects to minimize impacts of road construction and timber harvest on fish and wildlife resources. DOF will look at every timber harvest opportunity to maximize the habitat benefit for wildlife where feasible. Projects with dual goals of timber harvest and habitat enhancement are included in this plan.

Timber Harvest

Transportation and Access

Forest roads are created specifically to facilitate silvicultural activities involved in managing a productive forest, such as harvest of forest products, fire suppression, forest health and reforestation monitoring, pre-commercial treatments, etc. Most of the forest road system was built by loggers as part of timber sale contracts. Winter-only routes are used to minimize disturbance in areas of permafrost, high water tables, or with stream crossings, and much of the total volume harvested on state land occurs during the winter.

Once constructed, forest roads are a valuable asset to future logging operations, which benefit from lower operating costs to obtain and maintain access to merchantable timber. The public benefits from the access provided via the logging road system for firewood, hunting and trapping, recreation, and subsistence activities among many other compatible uses.

Ultimately, DOF envisions all areas of merchantable timber within TVSF and Forestry-classified general state lands will be connected to the road network. Larger sales have higher stumpage values and can support larger road projects. More experienced Operators purchase these larger

sales, and have the expertise and equipment to complete road projects.

A large majority of the state forested lands in the Copper River Area are not connected to any road system. Further development of a plan for road networks would need to be completed to access many areas. Short winter roads are normally used to obtain any forest products that are not immediately adjacent to existing roads.

Biomass / Fuelwood Harvests

The majority of wood taken from state lands in the Copper River Area is from Personal Use Firewood. In recent years there has not been an available source for any larger commercial harvesting of fuelwood.

Sawlog Harvests

Smaller logging operators continue to express interest in lower volume/acreage sales that fit their production capacity needs and are within their economic range. These sales generally involve fuelwood or mixed species areas along the existing road network. Demand for small sales < 10 acres has historically been met through small timber sales negotiated under AS 38.05.115, and comply with regulations established in 11 AAC 71.045. There are currently a few of these smaller operations in both Tok and Copper River.

Demand for larger sawlog sales in the Tok Area has been steady, with some signs of future increase.

All sawlog harvests will be planned to occur on the landscape in a patch mosaic utilizing natural lines and limited viewsheds. Many of the roads accessing the harvest units are designed for all-season, long-term access for forest management and public use. The FLUPs will address details of harvest, roads and all other important considerations. Some harvest units have been previously reviewed under different sale numbers and FLUPS. As these units are harvested, DOF will review the plan to ensure harvest design and transportation routes continue to be in line with the original FLUP.

Demand for sawlogs in the Copper River Area has been limited to smaller operations over the past 3-5 years. Most requests involve areas of less than ten acres, with planned harvests using single tree selection methods. One larger, mechanized logging operation has struggled to find an adequate timber supply in the local region. The local Resource Forester has been working closely with this operator to identify a steady source of timber, but with limited success. Due to the limited availability of timber resources, there are no large, defined logging units to include in this five-year timber schedule. All entities looking to harvest timber in the Copper River Area are encouraged to use available mapping options to locate timber on state land and work closely with the local Resource Forester to ensure the chosen timber is suitable for harvest.

Reforestation

Reforestation is completed through sale design which promotes natural seeding through adequate scarification techniques, seed tree sources, protection of existing saplings and pole timber during

harvest operations, and if necessary, planting of seedlings. Coppice regeneration with aspen and birch is the expected and predominant first regeneration of many of the sale areas. Sale areas generally reforest to a mixed stand of white spruce, birch, aspen and poplar, and DOF monitors reforestation through site visits and regeneration surveys. Reforestation efforts have been successful in multiple areas of the State Forest. All details of the regeneration methods used will be covered in detail in the Preliminary Best Interest Finding (PBIF) and Forest Land Use Plan (FLUP) process.

The law, AS 41.17.220 – 230, requires DOF to develop a management plan for the Tanana Valley State Forest. The management plan guides many of DOF's management actions. The FYSTS is consistent with the guidelines and direction established in the TVSF Management Plan. Some of the sales may be for areas outside of the boundaries of the TVSF and are proposed on state owned forestry classified lands; these sales are consistent with the YTAP and ETAP and other state land management plans.

Schedule Review Process

The Review Draft Five-Year Schedule of Timber Sales is submitted for review and comment to several state agencies. Comments about specific timber sales from Alaska Department of Fish and Game – Habitat Division, Alaska Division of Mining, Land and Water, Alaska Department of Environmental Conservation and other agencies are used to draft a FLUP and PBIF for timber sales in years one and two (AS 38.05.112). The FLUP and PBIF gives site specific information for each sale describing the location, estimated timber volume, harvest methods, reforestation plan, access, and other potential uses of the sale area. Before any commercial timber sale of ten acres or larger is offered, DOF prepares a FLUP and PBIF and makes a finding that the sale is in the State's best interest. The schedule followed by individual FLUPs and PBIF is then distributed for review by the public. Public comments are considered, and revisions made as appropriate before the schedule is adopted. Sales where the FLUPs and PBIF have been previously reviewed by the public and agencies are noted on the schedule. Sales that have been reviewed and are currently available over the counter are also listed.

Public & Agency review periods run concurrently from August 13, 2024, to 4:30pm AKDT, Friday, September 13, 2024.

Individual Sale Maps *All Areas*

Every individual sale on the proposed Five-Year Schedule of Timber Sales (FYSTS) can be viewed in greater geographic detail on DOF’s dynamic web-based viewer. Using the web map, interested parties may view any sale in many different contexts (i.e., at any scale; with other layers of interest such as historical sales, ownerships, or fire perimeters; with imagery vs topographic Basemaps, etc.), on any internet-enabled device, and may even download custom map views for offline use.

Providing this interactive and scalable viewing method to the public allows DOF to better meet the intent of the [FYSTS Statute](#) (AS 38.05.113) which reads in part: *“the department shall prepare a five-year schedule of timber sales planned on all land managed by the department. The timber sale schedule must provide a time line that identifies timber sales, their volumes, and their locations and must contain sufficient information to provide the public and the forest products industry with a basis to comment on proposed sale offerings.”*

Interested parties can always contact DOF for assistance with obtaining necessary information to understand, interpret, or provide comment on the proposed Five-Year Schedule.

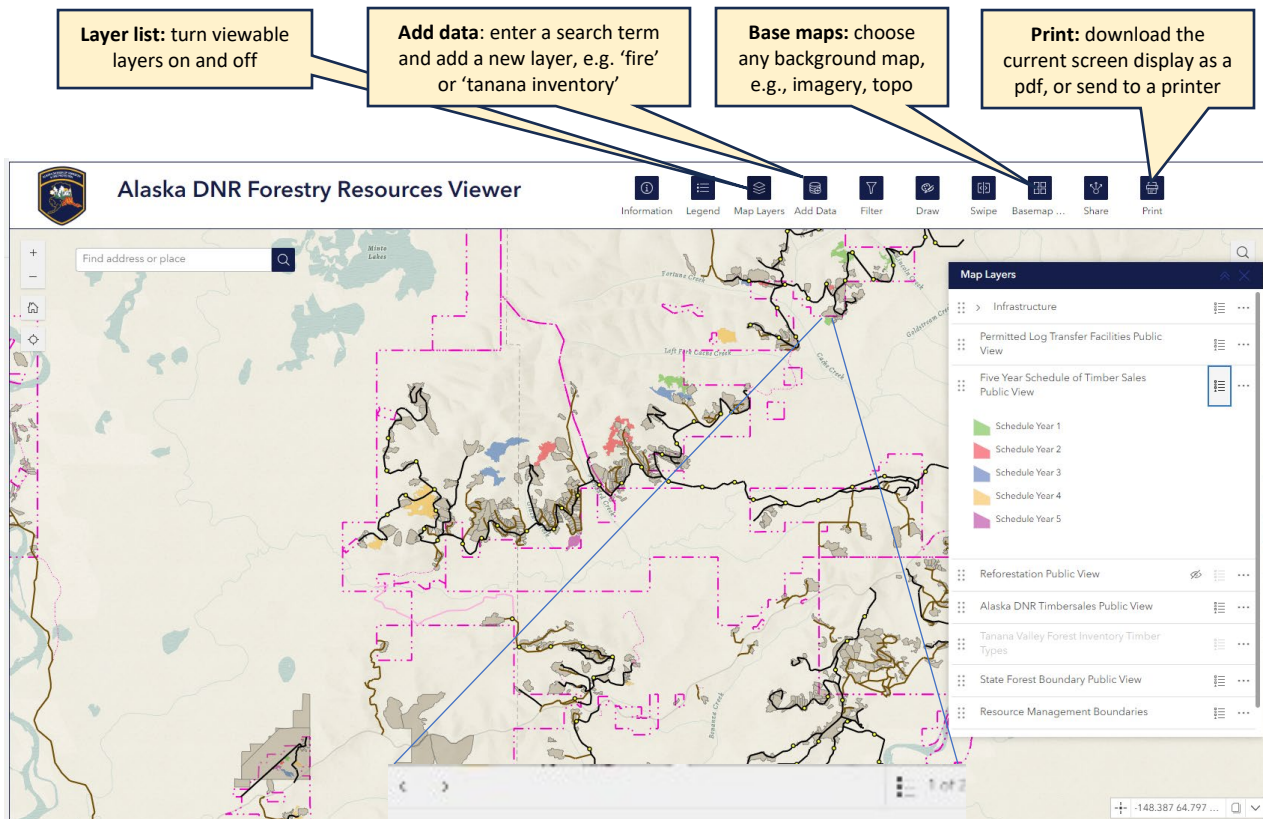
Individual sales proposed on the 2024 Tok-Copper River FYSTS may be viewed at the [Alaska DNR Forestry Resources Viewer](#) (also scan QR code below, or search in web browser). All sales will be symbolized by year in the layer ‘Five Year Schedule of Timber Sales Public View’ (searchable as ‘FYSTS Public View’, and included as a default layer in the Resources Viewer).

Alaska DNR Forestry Resources Viewer:



Alaska DNR Forestry Resources Viewer – FYSTS Public View Guide

- 1) Open a web browser on any internet-connected device. The web map interface is nearly identical on desktop or mobile (iOS or Android) devices.
- 2) Open the Alaska DNR Forestry Resources Viewer at <https://experience.arcgis.com/experience/82e11f6660d34b568319643cadee80ab>, or by typing ‘alaska forestry resources viewer’ or similar into your web browser’s search bar.
- 3) Zoom into sale or area of interest. Note the layer ‘FYSTS Public View’ is displayed by default, but is not visible until zooming past a scale of 1:1,200,000



Individual items (e.g., sales) on the map may be selected simply by clicking on them. In the case where more than 1 layer is present at the selected point, press the arrow icon (► upper right) to view all data associated with the specific layer.

The screenshot shows a data popup window titled 'Five Year Schedule of Sales' with a 'Zoom to' button. The data is as follows:

Sale Number	NC 1984-F
Sale Name	Casho Point Mixed
FYSTS Year	1
proposed year	2024
Management (Stock)	Timberlands
acres	25.68
Species 1	WhiteSpruce

**FY2024-2028 TOK AREA
INDIVIDUAL TIMBER HARVEST SCHEDULE**

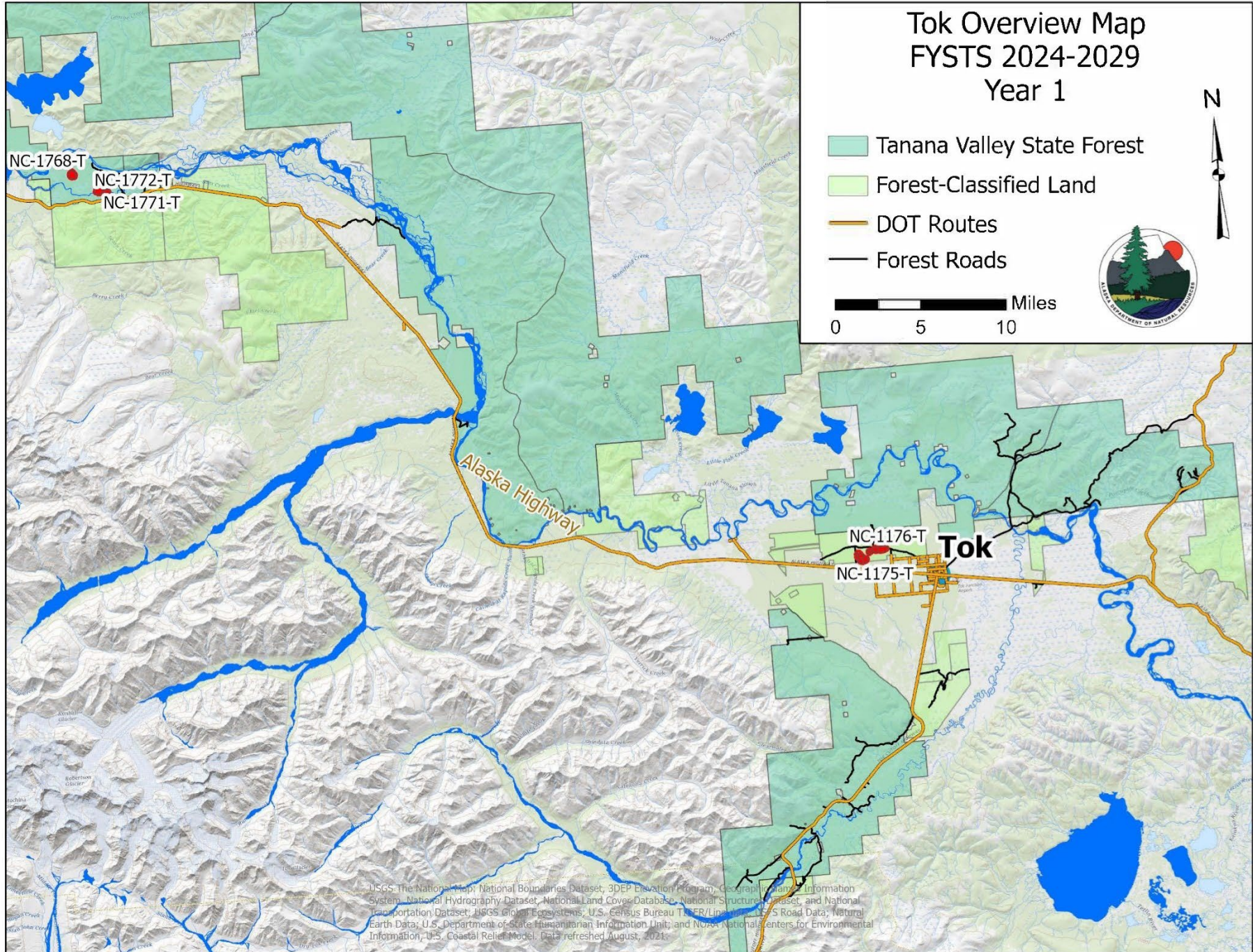
TIMBER HARVEST SCHEDULE

Year 1 of 5
 July 1, 2024 to June 30, 2025

Spruce
 Sawlog (MBF) 91
 Fuelwood
 (Cords) 1,636

FYSTS Year	Sale Number	Units	Sale Name	Legal Description	Acres	Species	Product	Volume	Area Plan	Management Unit	Remarks
1	NC-1768-T	1	JOHNSON SPRUCE	Sections 5, 6, 7, 8, T22N, R5E	34.1	White Spruce	Sawlog	87,000	TVSF	10C	
1	NC-1771-T	1	JOHNSON SALVAGE SPRUCE	Sections 9, 16, T22N, R5E	29.2	White Spruce	Sawlog	74,500	TVSF	10C	
1	NC-1772-T	1	JOHNSON SALVAGE SPRUCE	Sections 9, 10, 15, 16, T22N, R5E	9.1	White Spruce	Sawlog	23,200	TVSF	10C	
1	NC-1175-T	5	Tok Hazardous Fuels #7	Section 9, T18N, R12E	53.2	Mixed	Fuelwood	66,900	ETAP	241	White Spruce
1	NC-1176-T	5	Tok Hazardous Fuels #8	Sections 8, 9, 10, T18N, R12E	50.2	White Spruce	Fuelwood	74,150	ETAP	22	Classified 'Settlement'
1	NC-1792-T	1	Tok River Block A #56	Section 16, T16N, R12E	11.5	White Spruce	Sawlog	11,500	TVSF	14	
1	NC-1791-T	1	Tok River Block A #46	Section 15, T16N, R12E	13.6	White Spruce	Sawlog	13,600	TVSF	14	
1	NC-1784-T	1	Tok River Block A #32	Section 11, T16N, R12E	13.3	White Spruce	Sawlog	16,800	TVSF	14	

2024-2028 Five Year Schedule of Timber Sales
DOF – Tok- Copper River



Tok
 Northern Region

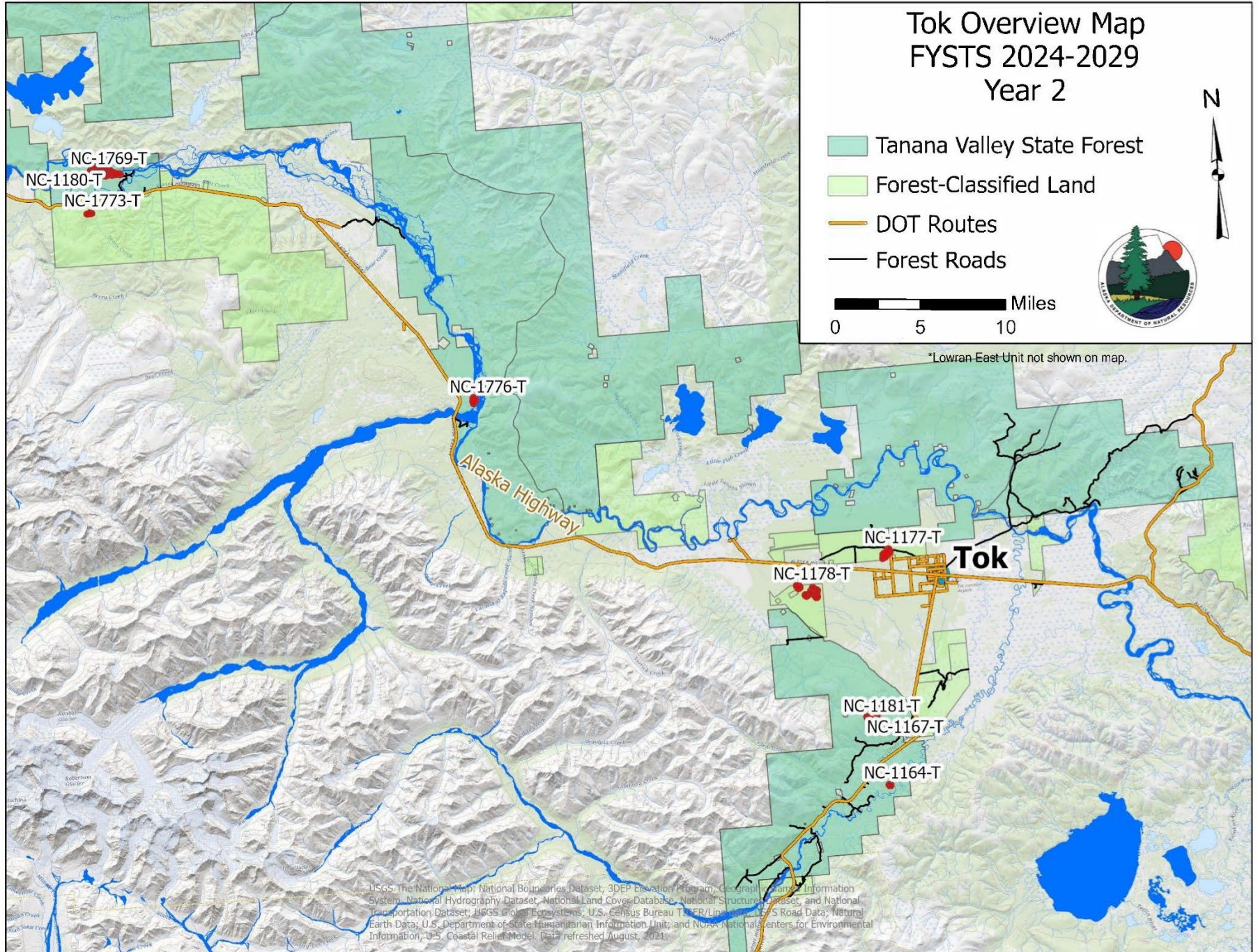
STATE OF ALASKA
 DEPARTMENT OF NATURAL RESOURCES
 DIVISION OF FORESTRY

of Sales 11
 Total Acres 1068.4
 Spruce Sawlog (MBF) 91
 Fuelwood (Cords) 1,636

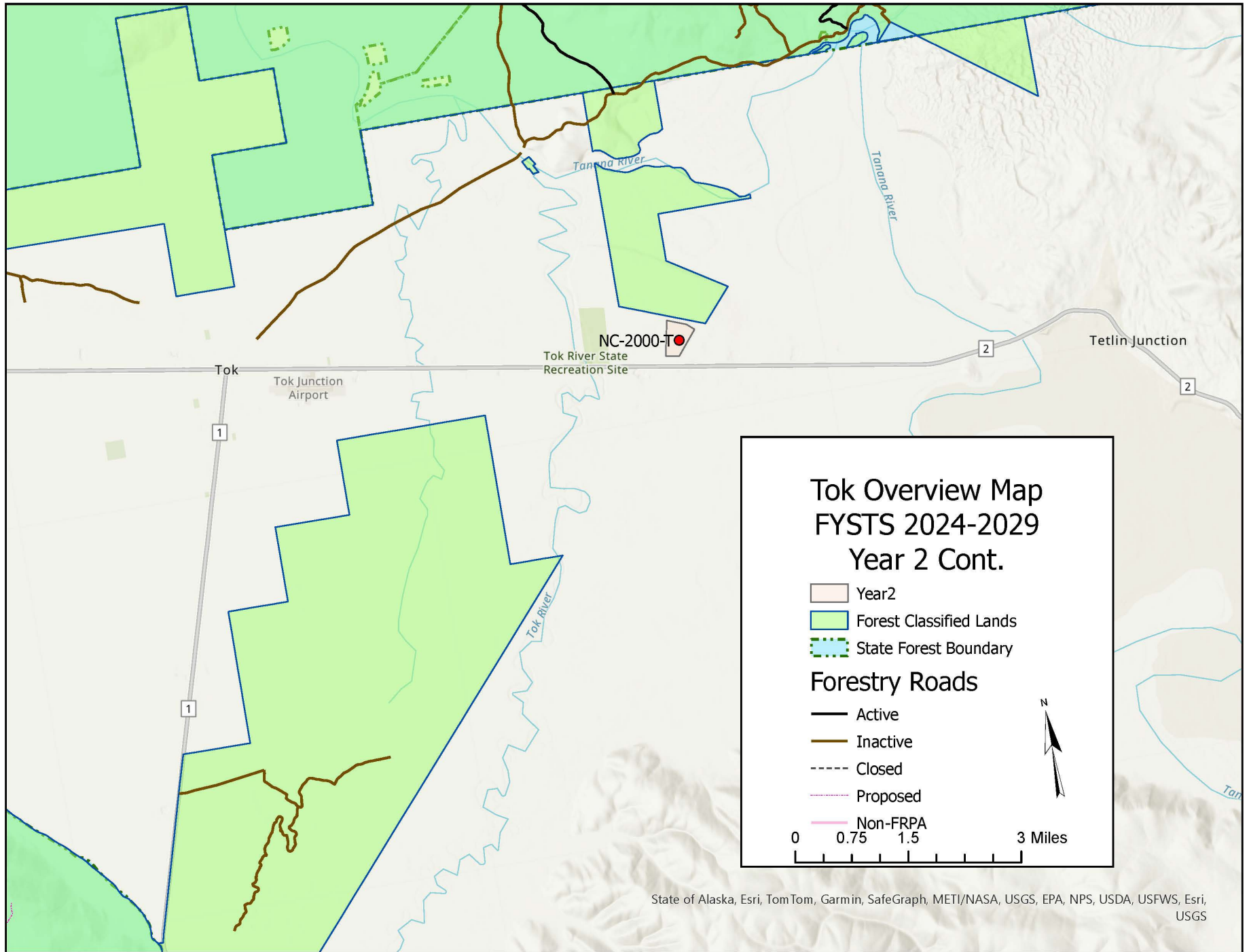
TIMBER HARVEST SCHEDULE
Year 2 of 5
 July 1, 2025 to June 30, 2026

FYSTS Year	Sale Number	Units	Sale Name	Legal Description	Acres	Species	Product	Volume	Area Plan	Management Unit	Remarks
2	NC-1164-T	1	Tok River Block	Section 15, T1N, R12E	10.1	White Spruce	Fuelwood	14,830	TVSF	14	Previously reviewed as NC-837-T
2	NC-1167-T	1	Lookout Timber Sale North #1	Sections 21, 28, T17N, R12E	72.4	White Spruce	Fuelwood	124,570	TVSF	14	
2	NC-1177-T	1	Tok Hazardous Fuels #9	Sections 10, 11, T1N, R12E	46.6	White Spruce	Fuelwood	169,500	ETAP	2	Classified Settlement
2	NC-1178-T	7	Tok Hazardous Fuels #10	Sections 13, 14, 24, T18N, R11E	63.8	White Spruce	Fuelwood	94,910	ETAP	2	
2	NC-1180-T	12	Johnson Slough Sawlog Sale	Sections 3, 4, 9, 10, T22N, R5E	702.3	White Spruce	Sawlog	268,600	TVSF	10C	
2	NC-1181-T	1	Lookout Timber Sale North #2	Section 28, T17N, R12E	12.4	White Spruce	Fuelwood	124,570	TVSF	14	
2	NC-1769-T-1	1	Johnson Spruce #2	Sections 4, 8, 9, T22N, R5E	39.5	White Spruce	Sawlog	97,500	TVSF	10C	
2	NC-1773-T	1	Sears Creek Spruce	Sections 20, 21, T22N, R5E	10.7	White Spruce	Sawlog	27,300	ETAP	10C	
2	NC-1776-T	1	Tower Bluff	Sections 13, 24, T20N, R11E	19.4	White Spruce	Sawlog	49,500	ETAP	L-01	
2	NC-1785-T	1	Tok River Block A #36a	Section 11, T16N, R12E	10.2	White Spruce	Sawlog	6,000	TVSF	14	
2	NC-2000-T	1	Loran East	Section 19, T18N, R13E	81.0	White Spruce	Sawlog	28,500			On second map. Pg. 13

2024-2028 Five Year Schedule of Timber Sales
DOF – Tok- Copper River



2024-2028 Five Year Schedule of Timber Sales
DOF – Tok- Copper River



Tok
 Northern Region

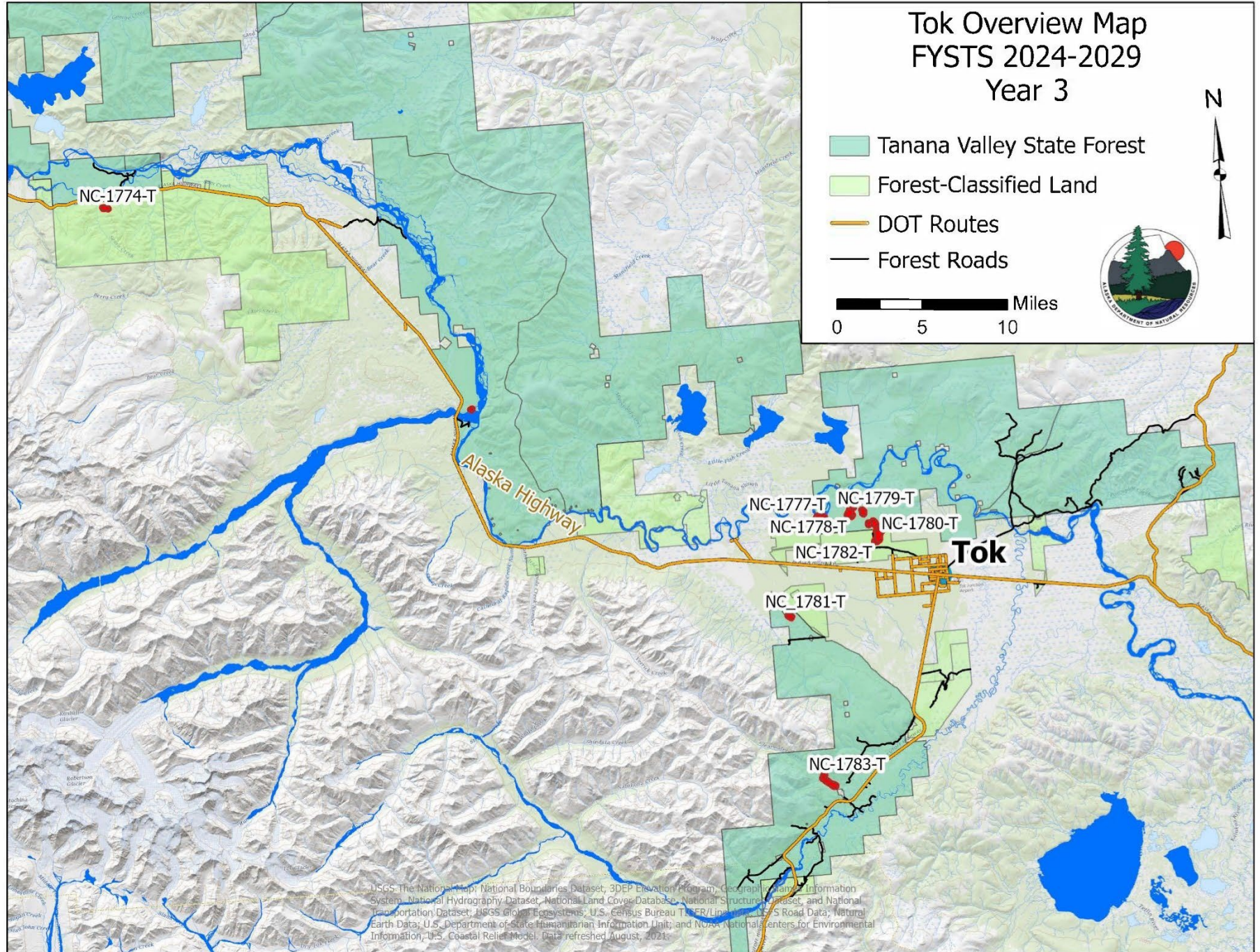
STATE OF ALASKA
 DEPARTMENT OF NATURAL RESOURCES
 DIVISION OF FORESTRY

TIMBER HARVEST SCHEDULE
Year 3 of 5
 July 1, 2026 to June 30, 2027

of Sales 10
 Total Acres 327.7
 Spruce Sawlog (MBF) 91
 Fuelwood (Cords) 1,636

FYSTS Year	Sale Number	Units	Sale Name	Legal Description	Acres	Species	Product	Volume	Area Plan	Management Unit	Remarks
3	NC-1774-T	1	SEARS CREEK SPRUCE 2	Sections 16, T22N, R5E	13.3	White Spruce	Sawlog	33,175	ETAP	U-03	
3	NC-1771-T	1	Tok North #1	Section 31, T19N, R12E	42.7	White Spruce	Sawlog	108,970	TVSF	TBA	
3	NC-1776-T	3	Tok North #2	Sections 32, 33, T19N, R12E	49.8	White Spruce	Sawlog	125,050	TVSF	TBA	
3	NC-1779-T	1	Tok North #3	Sections 28, 33, T19N, R12E	17.9	White Spruce	Sawlog	45,935	TVSF	TBA	
3	NC-1780-T	2	Tok North #4	Section 34, T19N, R12E	31.6	White Spruce	Sawlog	57,930	TVSF	TBA	
3	NC-1781-T	1	Eagle Trail #1	Sections 26, 27, T18N, R12E	14.4	White Spruce	Sawlog	35,730	TVSF	TBA	
3	NC-1782-T	3	Tok North #5	Sections 33, 34, T19N, R12E	80.4	White Spruce	Sawlog	86,770	TVSF	TBA	
3	NC-1793-T	1	Tok River Block B #100	Section 19, T16N, R12E	16.3	White Spruce	Sawlog	15,200	TVSF	TBA	
2	NC-1785-T	1	Tok River Block A #36a	Section 11, T16N, R12E	10.2	White Spruce	Sawlog	6,000	TVSF	14	

2024-2028 Five Year Schedule of Timber Sales
DOF – Tok- Copper River



Tok
 Northern Region

STATE OF ALASKA
 DEPARTMENT OF NATURAL RESOURCES
 DIVISION OF FORESTRY

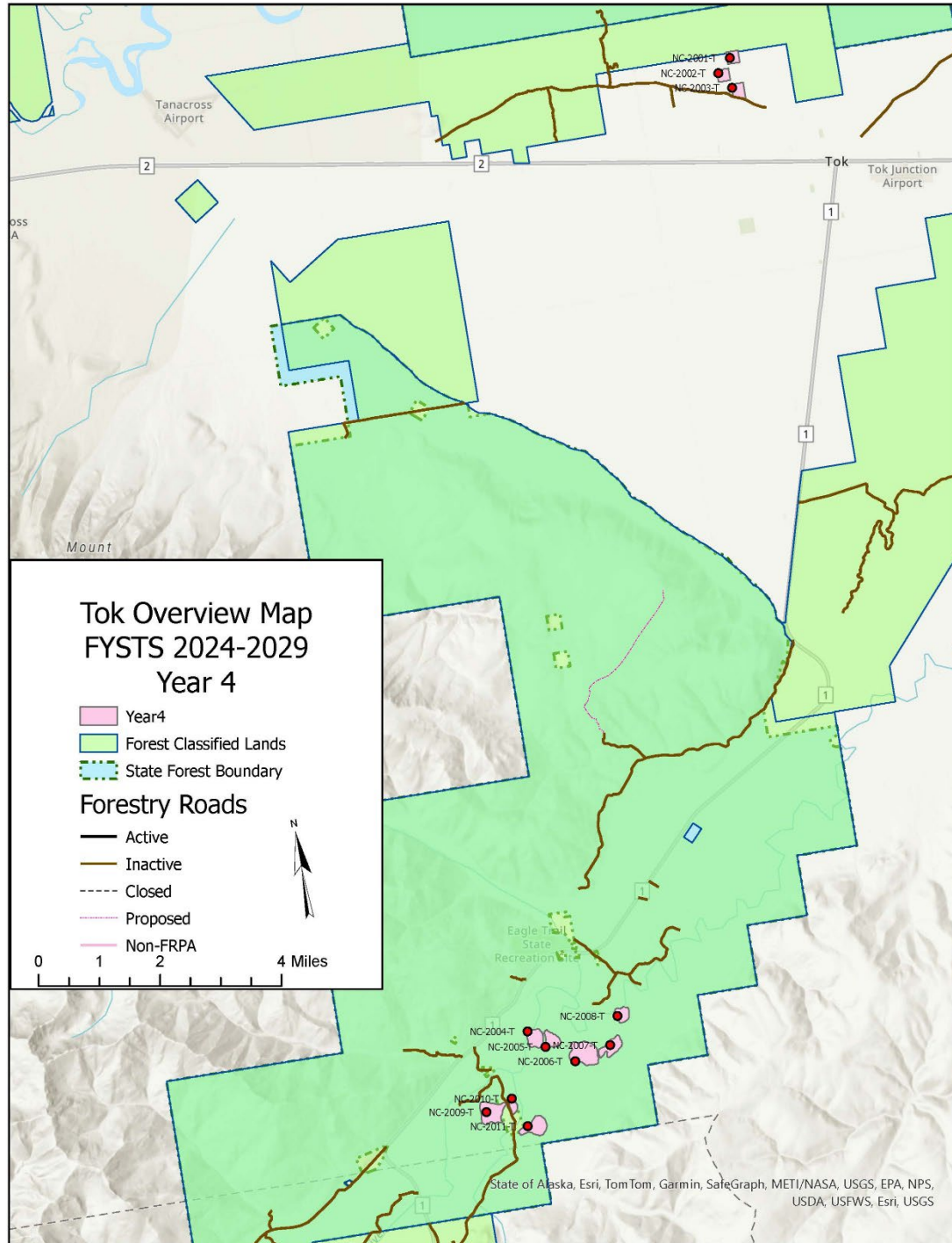
TIMBER HARVEST SCHEDULE
Year 4 of 5
 July 1, 2027 to June 30, 2028

of Sales 12
 Total Acres 485.8
 Spruce Sawlog (MBF) 91
 Fuelwood (Cords) 1,636

FYSTS Year	Sale Number	Units	Sale Name	Legal Description	Acres	Species	Product	Volume*	Area Plan	Management Unit	Remarks
4	NC-2008-T	1	Tok River East 27-5	S29, C016N012E	30.0	White Spruce	Sawlogs	465	TVSF	12	
4	NC-2007-T	1	Tok River East 27-4	S29, C016N012E	47.4	White Spruce	Sawlogs	734	TVSF	12	
4	NC-2006-T	1	Tok River East 27-3	S30, 29, C016N012E	97.0	White Spruce	Sawlogs	1,504	TVSF	12	
4	NC-2005-T	1	Tok River East 27-2	S30, C016N012E	36.6	White Spruce	Sawlogs	568	TVSF	12	
4	NC-2004-T	1	Tok River East 27-1	S30, C016N012E	44.5	White Spruce	Sawlogs	689	TVSF	12	
4	NC-2010-T	1	Tok River East 27-7	S36, C016N011E	17.3	White Spruce	Sawlogs	295	TVSF	12	
4	NC-2009-T	1	Tok River East 27-6	S36, C016N011E	76.0	White Spruce	Sawlogs	1,177	TVSF	12	
4	NC-2011-T	1	Tok River East 27-8	S36, C016N011E & S31, C016N012E	56.6	White Spruce	Sawlogs	962	TVSF	12	
4	NC-2002-T	1	Moosehorn 27-2	S12, C018N012E	25.0	White Spruce	Sawlogs	375	TVSF	12	
4	NC-2003-T	1	Moosehorn 27-3	S12, C018N012E	30.5	White Spruce	Sawlogs	457	TVSF	12	
4	NC-2001-T	1	Moosehorn 27-1	S1, C018N012E	25	White Spruce	Sawlogs	375	TVSF	12	

*all volumes converted from CCF (100 cubic feet). Sawlog Volume: MBF (1,000 board-feet) = 1 CCF * 0.39. Fuelwood Volume: Cords = 1 CCF / 0.9

2024-2028 Five Year Schedule of Timber Sales
DOF – Tok- Copper River



Tok
 Northern Region

STATE OF ALASKA
 DEPARTMENT OF NATURAL RESOURCES
 DIVISION OF FORESTRY

TIMBER HARVEST SCHEDULE
Year 5 of 5
 July 1, 2028 to June 30, 2029

of Sales 10
 Total Acres 352.1
 Spruce Sawlog (MBF) 91
 Fuelwood (Cords) 1,636

FYSTS Year	Sale Number	Units	Sale Name	Legal Description	Acres	Species	Product	Volume*	Area Plan	Management Unit	Remarks
5	NC-2012-T	1	Moosehorn 28-1	S1, C018N012E	25.0	White Spruce	Sawlogs	375	TVSF	10	
5	NC-2013-T	1	Moosehorn 28-2	S12, C018N012E	25.0	White Spruce	Sawlogs	375	TVSF	10	
5	NC-2014-T	1	Moosehorn 28-3	S12, C018N012E	17.3	White Spruce	Sawlogs	260	TVSF	10	
5	NC-2016-T	1	Tok River East 28-1	S19, C016N012E	31.3	White Spruce	Sawlogs	485	TVSF	10	
5	NC-2015-T	1	Tok River East 28-2	S30, C016N012E	26.8	White Spruce	Sawlogs	416	TVSF	10	
5	NC-2017-T	1	Tok River East 28-3	S36, C016N011E	16.4	Whit Spruce	Sawlogs	278	TVSF	10	
5	NC-2018-T	1	Tok River East 28-4	S35, C016N011E	97.1	White Spruce	Sawlogs	1,650	TVSF	10	
5	NC-2019-T	1	Tok River East 28-5	S35, C016N011E	53.8	White Spruce	Sawlogs	914	TVSF	10	
5	NC-2020-T	1	Tok River East 28-6	S35, C016N011E	59.4	White Spruce	Sawlogs	1,010	TVSF	10	

**all volumes converted from CCF (100 cubic feet). Sawlog Volume: MBF (1,000 board-feet) = 1 CCF * 0.39. Fuelwood Volume: Cords = 1 CCF / 0.9*

2024-2028 Five Year Schedule of Timber Sales
 DOF – Tok- Copper River

